

Schedule of Estimated Prepaid Fares for a Taxi Trip Friday and Saturday nights - 10 pm to 5 am Darwin and Palmerston Taxi Area

Distance	Up to 4 Passengers	5 or more Passengers
	Estimated Fare	Estimated Fare
5 km	\$15	\$20
10 km	\$24	\$34
15 km	\$34	\$48
20 km	\$43	\$62
25 km	\$53	\$76
30 km	\$62	\$90
35 km	\$72	\$105
40 km	\$81	\$119

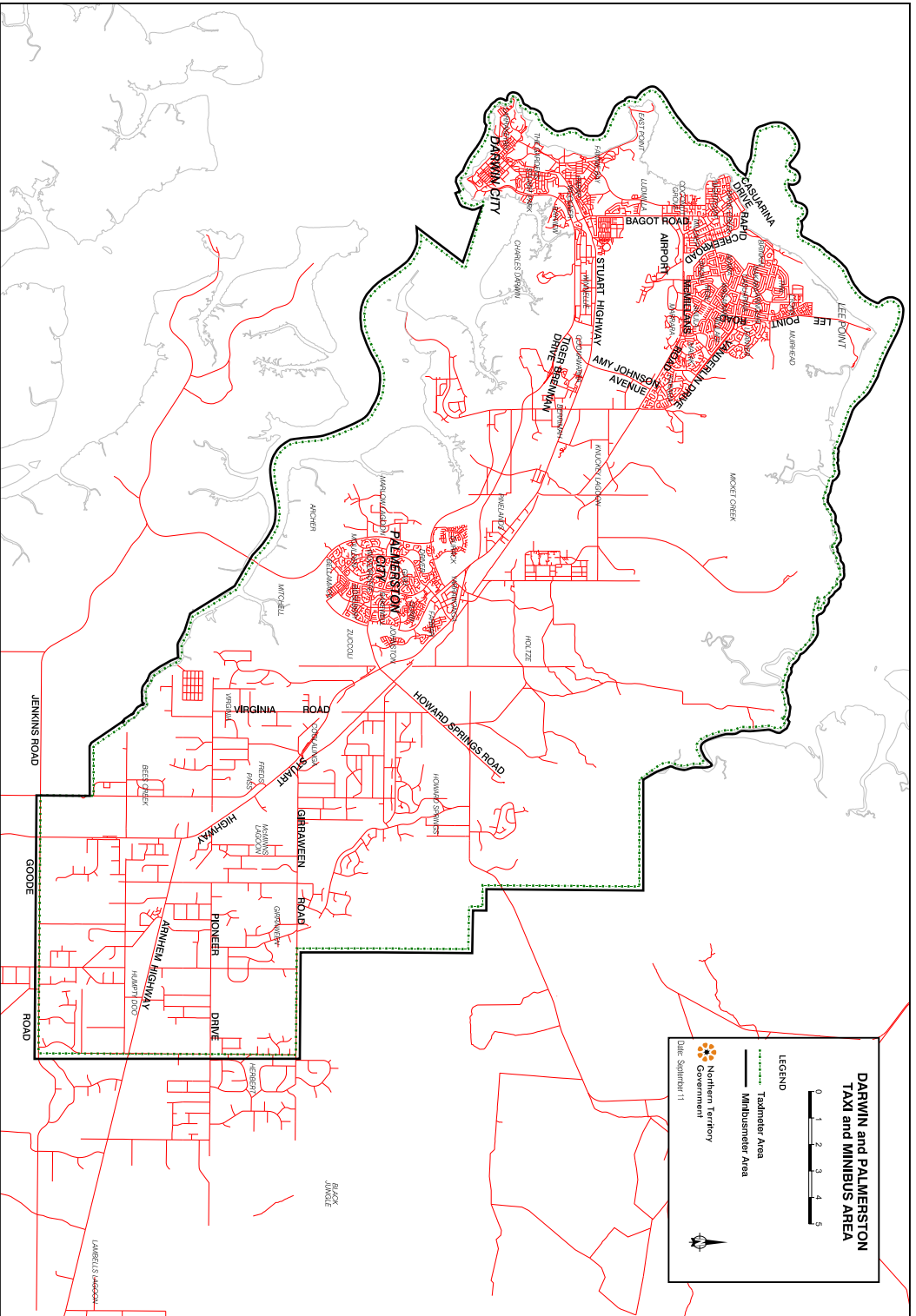
Exemption from Prepaying a Taxi Fare

- All airport pick ups
- Taxi Subsidy Scheme Members

Approved by the Director Commercial Passenger (Road) Transport
1 October 2016

Department of Transport





**DARWIN and PALMERSTON
TAXI and MINIBUS AREA**



- LEGEND**
- Taxi-meter Area
 - Minibus-meter Area
 - Northern Territory Government



Date: September 11