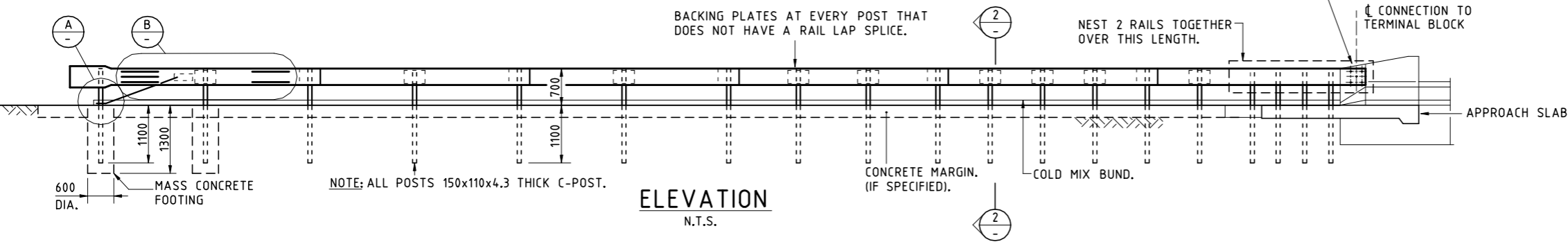
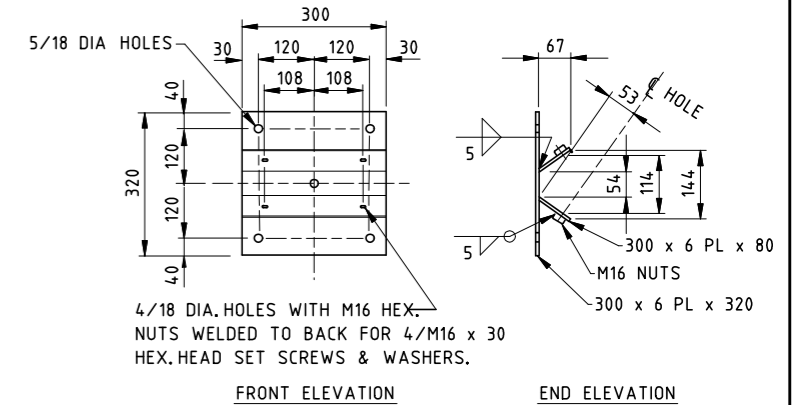


PLAN
N.T.S.



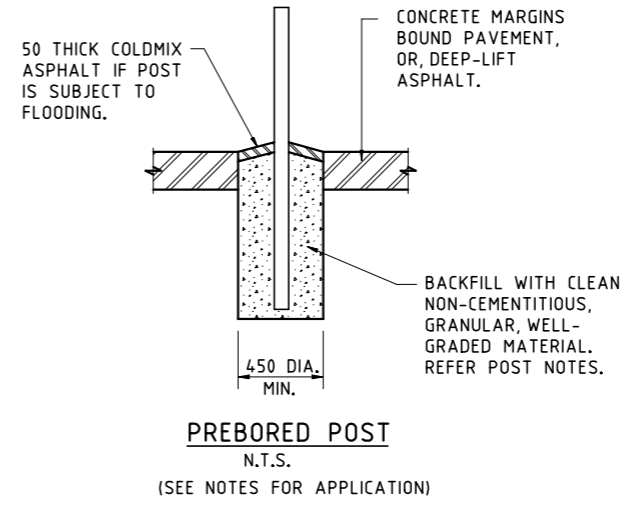
ELEVATION
N.T.S.



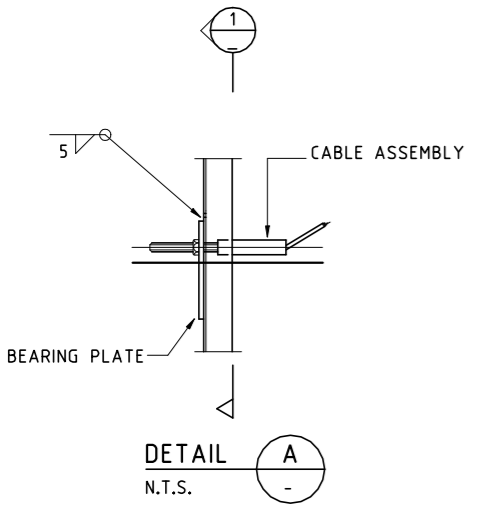
APPROACH GUARDRAIL ANCHOR PLATE
N.T.S.)

NOTES...

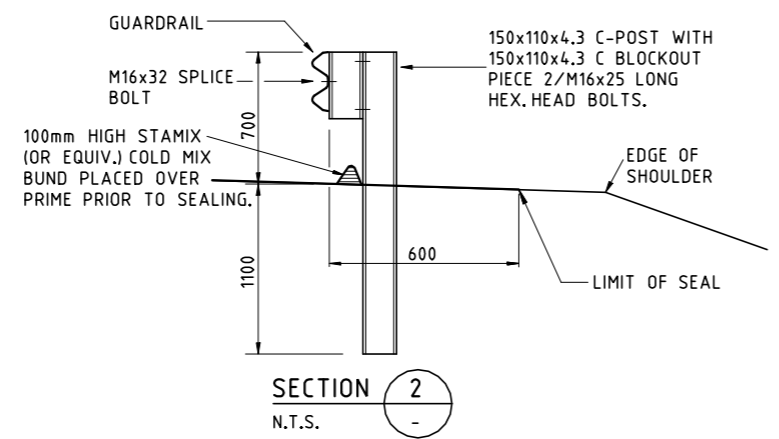
- GUARDRAIL DELINEATORS SHALL BE CONSTRUCTED USING 100x50 RED 'SCOTCHLITE' RETRO-REFLECTIVE MATERIAL AND 100x25 WHITE 'SCOTCHLITE' STRIPS AND BOLTED TO THE BLOCK OUT PIECES OR TO THE POSTS WHERE BLOCK OUTS ARE NOT USED. THE BHP CIVIL PRODUCTS DOUBLE-SIDED REFLECTOR IS AN ACCEPTABLE UNIT. THE TOP OF THE DELINEATOR SHALL BE 220 ABOVE THE TOP OF THE GUARDRAIL SO THAT THE APPROACHING DRIVER ALWAYS SEES RED ON HIS LEFT AND WHITE ON HIS RIGHT HAND SIDE. PUT AT EACH END AND AT 12m CENTRES.
- ALL STEELWORK SHALL BE HOT DIP GALVANISED AFTER FABRICATION OF ALL WELDED COMPONENTS TO AS.4680.
- ALL CONCRETE SHALL BE N25 IN ACCORDANCE WITH AS 3600
- DETAILS NOT SPECIFICALLY SHOWN ON THIS DRAWING SHALL BE TO AS.3845 UNLESS NOTED OTHERWISE.
- PUT BACKING PLATES BEHIND RAILS AT ALL POSTS AT WHICH THERE ARE NO RAIL SPLICES.
- OBTAIN THE SUPERINTENDENT'S APPROVAL FOR POST SETOUT DIMENSIONS.
- ERECT W-BEAM RAIL AND POSTS AND THEN OBTAIN SUPERINTENDENT'S APPROVAL OF THE RAIL ALIGNMENT PRIOR TO SETTING POSTS IN POSITION.
- THE 1200 DISTANCE FROM THE BULLNOSE IS FROM THE OUTSIDE EDGE OF SHOULDER OF THE APPROACH ROAD. DO NOT MEASURE THIS 1200 FROM FACE OF BRIDGE KERB.
- POSTS...**
- POSTS MAY BE DRIVEN INTO THE GROUND PROVIDED THIS CAN BE ACHIEVED WITHOUT DAMAGE TO THE POST.
- POSTS THAT ARE OUT OF VERTICAL BY MORE THAN 20MM OVER THE PROJECTING LENGTH, OR MORE THAN 25MM OUT OF POSITION, SHALL BE REMOVED AND RE-INSTALLED IN 450MM DIAMETER HOLES AS PER THE DETAIL ON THIS SHEET.
- PREBORE 450MM DIAMETER HOLES FOR POSTS THAT ARE TO BE INSTALLED THROUGH (A) CONCRETE SLAB OR MARGIN, (B) VERY STIFF OR HARD CLAY, (C) LOOSE SAND, (D) BOUND (STABILISED) PAVEMENT, OR (E) DEEP LIFT ASPHALT PAVEMENT, CENTRALISE THE POSTS IN THE HOLE AND BACKFILL USING CLEAN, WELL-GRADED, NON-CEMENTITIOUS, GRANULAR MATERIAL. THIS DETAIL SHOULD NOT BE USED FOR FIRST 2 POSTS CAST IN MASS CONCRETE.
- COMPACT THE BACKFILL SUCH THAT (A) IT DOES NOT SETTLE DURING WET-SEASON SERVICE AND (B) THE POST DOES NOT MOVE MORE THAN 3MM AT GROUND LEVEL UNDER THE ACTION OF A 1KN LOAD APPLIED 200MM FROM THE TOP OF THE POST IN ANY DIRECTION.
- THE COMPACTED HOLE SHALL CONFORM TO THE DETAIL ON THIS SHEET ON FLOODWAYS OR WITHIN CONCRETE MARGINS, BACKFILL THE TOP 50MM OF THE HOLE WITH COLD-MIX ASPHALT AS INDICATED ON THE DETAIL.
- SEALING...**
- THE WIDTH OF SEAL SHALL EXTEND BEHIND THE GUARD RAIL AS SHOWN AT SECTION 2, FOR THE FULL LENGTH AND ENCOMPASS THE BULL NOSE.



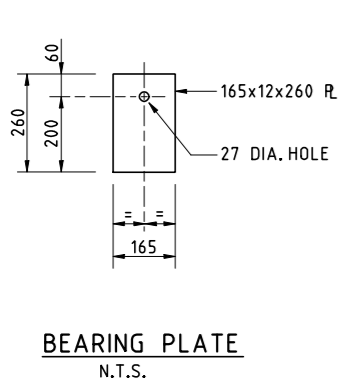
PREBORED POST
N.T.S.
(SEE NOTES FOR APPLICATION)



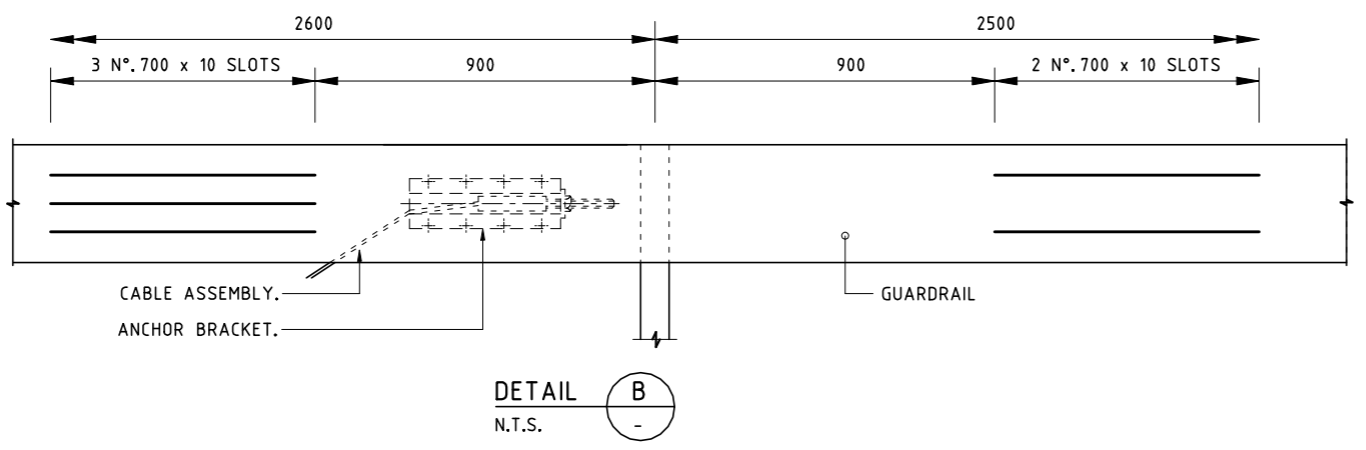
DETAIL A
N.T.S.



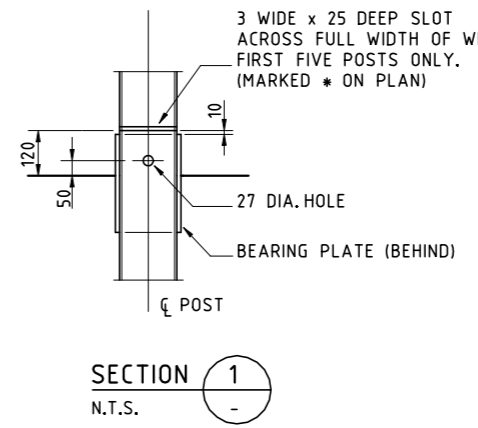
SECTION 2
N.T.S.



BEARING PLATE
N.T.S.



DETAIL B
N.T.S.



SECTION 1
N.T.S.

24/07/2007 10:29:50 AM X:\CIVIL STANDARD DRAWINGS\4 - FENCES\C(S)1311-E.dgn

E	SEALING AT GUARD RAIL DETAIL & NOTES ADDED.	23/07/07	R.V.
D	TERMINAL PANEL NOTE ALTERED.	15/11/02	G.C.
C	GOVERNMENT DEPARTMENT LOGO CHANGED	7/05/02	G.C.
B	POSTS AND NOTES ALTERED	25/09/00	G.C.
A	TERMINAL DETAILS REVISED TO AS.3845	17/8/99	G.C.
No.	DESCRIPTION	DATE	INIT.
	AMENDMENTS		

DRAWN	CHECKED
S.H.W.	N.S.W.
AUGUST 1993	SEPT 1994
DATE	DATE
DESIGNED	CHECKED
N.W.	G.C.
AUGUST 1993	SEPT 1994
DATE	DATE
DESIGN PROJECT LEADER	PROJECT OFFICER
G.A. Curran	
DATE 28/11/96	DATE


Northern Territory Government
 Department of Planning and Infrastructure

STANDARD DRAWING	
TYPICAL APPROACH GUARDRAIL	
AT BRIDGES	
FILE No.	ASSET No.
SHEET No.	DRAWING No.
1 OF 1	C(S)1311
AMEND.	SHEET SIZE
F	A1