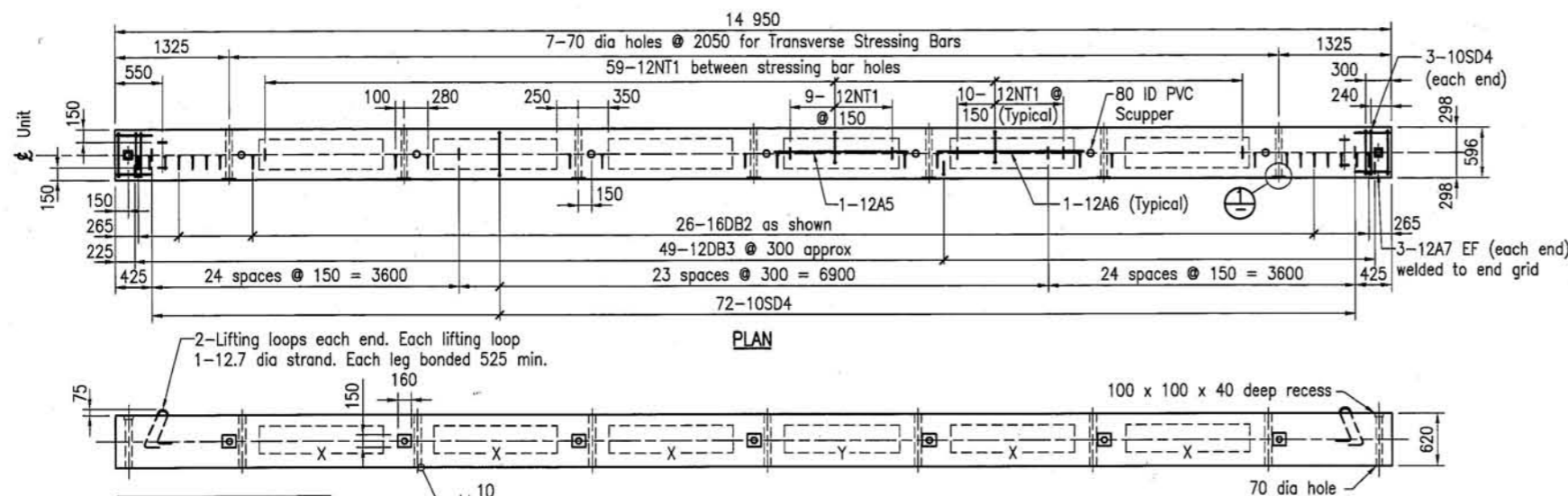
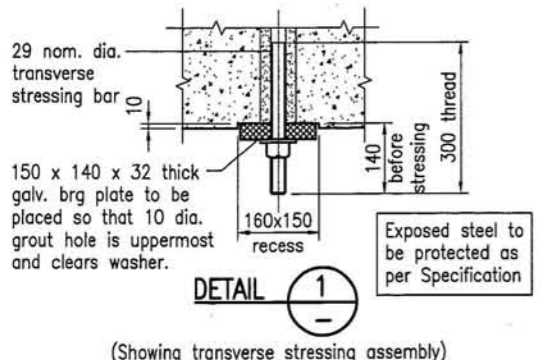
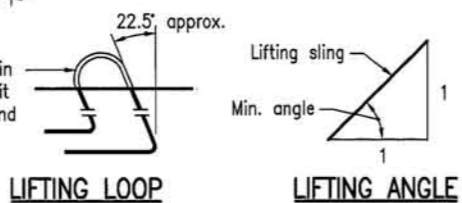
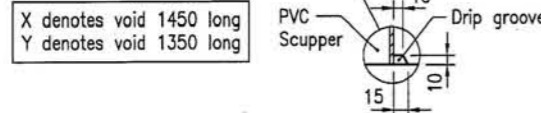


**ELEVATION
DECK UNIT TYPE A**



**ELEVATION
DECK UNIT TYPE B**



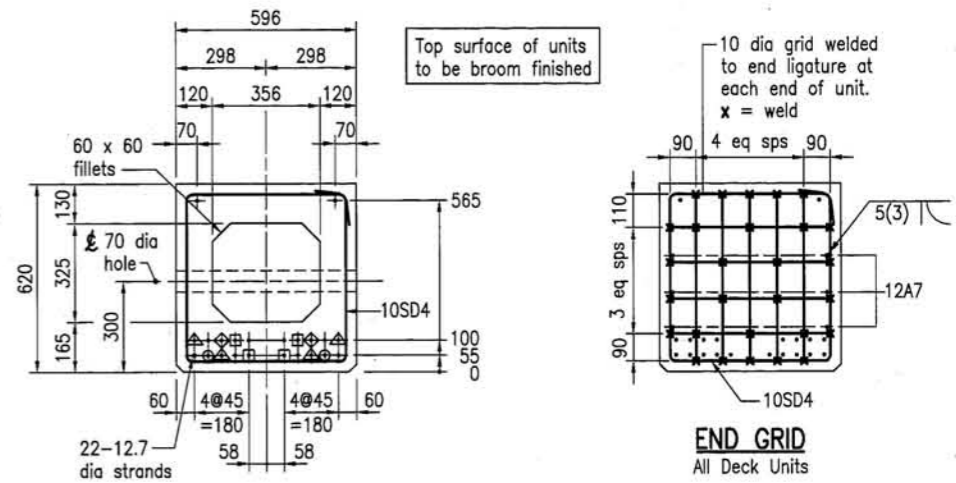
DESIGN HOG OF UNITS

20mm at Transfer
30mm at 30 days
35mm at 100 days

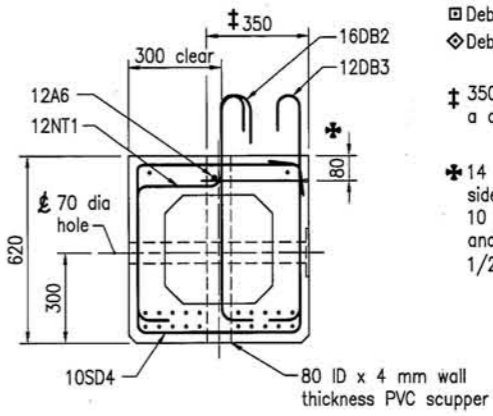
STEEL SCHEDULE

DIAGRAM	NT	DB	SD*	A	12A5	12A6	12A7
MARK	12NT1	16DB2	12DB3	10SD4	12A5	12A6	12A7
BAR DIA.	12	16	12	10	12	12	12
GRADE	D	D	D	R	D	D	D
DIMENSION A	475	760	760	525	1550	1715	400
DIMENSION B	285	155	115	550	-	-	-
DIMENSION C	265	-	-	175	-	-	-
PIN DIA.	50	65	50	30	-	-	-
LOCATION	Type B	Type B	Type A	Type B	Type B	A & B	
No. / UNIT	59	26	49	54	78	1	5

*'SD' bars may be replaced with 'S' bars to these dimensions. Refer to Drawings No 1043 & 1044.



**TYPICAL SECTION
DECK UNIT TYPE A**



**TYPICAL SECTION
DECK UNIT TYPE B**

Strand pattern and void as for Deck Unit Type A

Weight of unit? to be included in notes.

NOTES

- Concrete class to be 50MPa/20. Strength at transfer to be 40MPa minimum.
- Cover to reinforcing steel and strands to be 30mm unless shown otherwise. Exposure classification B1.
- All strands to be 12.7 dia. LR Super Grade to AS 1311. Pretensioning force at stressing = 147kN per strand.
- All chamfers where shown to be 25 x 25mm maximum.
- Concrete shall be cast in rigid forms and subjected to intense vibration.
- Ends of strands to be coated with 0.3mm minimum of surface tolerant epoxy after grinding flush with ends of units (3 coats minimum).
- Spacing of ligatures in units may be altered slightly to clear stressing bar recesses, scuppers and formed holes.
- Reinforcing steel to be in accordance with AS/NZS 4671.
- Bearing plates and washers to be hot dip galvanized to AS/NZS 4680 and nuts to AS 1214.
- Transverse stressing bars to be 29 dia. Regular Grade to AS 1313.
- Transverse stressing force at lock off shall be 350kN.
- Welding: Welding symbols conform to AS 1101.3. Welding of bar splices to conform to AS/NZS 1554.3. All welds to be SP category. Tack welding for location purposes to conform to AS/NZS 1554.3 Clauses 3.3.1 and 3.3.2. Welding consumables to be E4816, E4818 or W50X. Welding shall not be carried out within 25mm of any bent portion of the bar.
- Voids shall be cellular polystyrene Grade SL to AS 1366.3.
- When casting units the manufacturer shall make allowance for axial shortening (equal amounts each end).

This drawing is reproduced with permission from Department of Main Roads, Queensland Government. Design Loading to SM1600 and HLP400.

DRAWN	CHECKED
DATE	DATE
DESIGNED	CHECKED
DATE	DATE
DESIGN PROJECT LEADER	PROJECT OFFICER
DATE	DATE



STANDARD DRAWING				
15m PSC DECK UNITS (SQUARE)				
FILE No.	ASSET No.	SHEET No.	DRAWING No.	AMEND.
-	-	1 OF 1	C(S)1702	-
				SHEET SIZE A1

No.	DESCRIPTION	DATE	INIT.
AMENDMENTS			